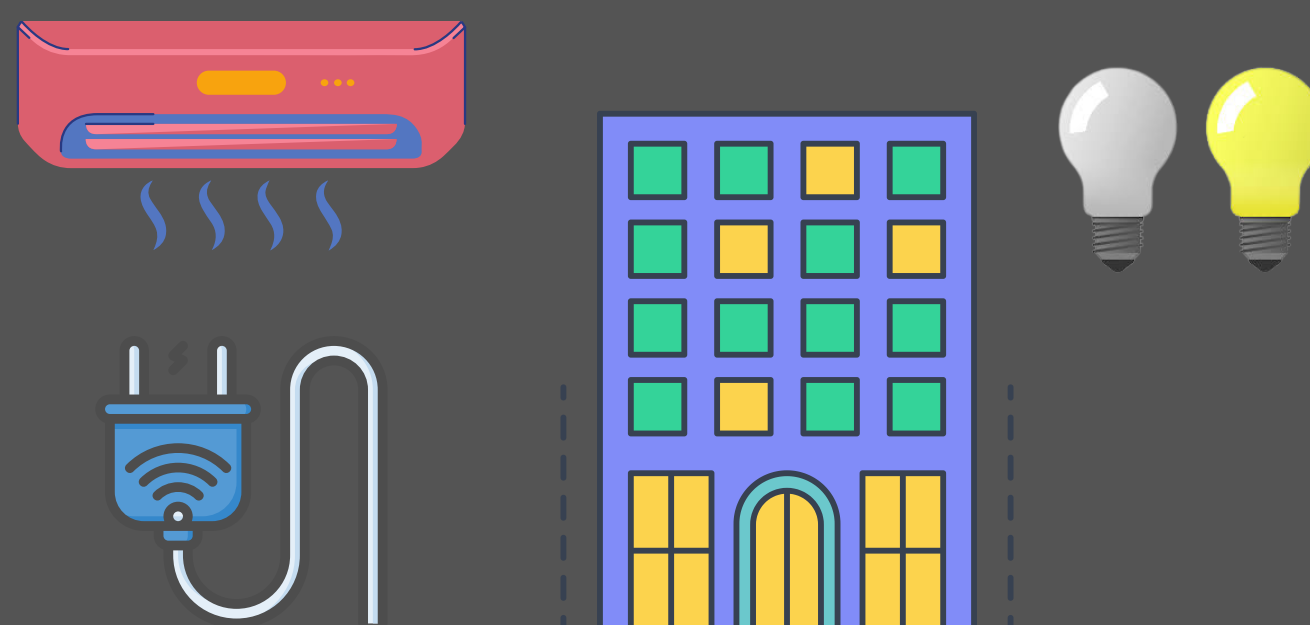


Earth Hour 2022

26 March 2022 · 8.30pm - 9.30pm



Participating properties will be switching off non-essential lights, appliances and equipment within their premises

Across the Globe

- YTL Group Offices

Malaysia

- ERL Maintenance Support (E-MAS)
- SR Property Management
- YTL International College of Hotel Management
- Kuala Lumpur Performing Arts Centre (KLPAAC)
- JW Marriott Kuala Lumpur
- Ritz-Carlton Kuala Lumpur
- The Majestic Malacca
- Pangkor Laut Resort

Singapore

- Wisma Atria
- YTL PowerSeraya

Indonesia

- YTL Jawa Timur

Thailand

- The Surin Phuket

Japan

- Niseko Village

Australia

- Brisbane Marriott Hotel
- Melbourne Marriott Hotel
- Sydney Harbour Marriott Hotel

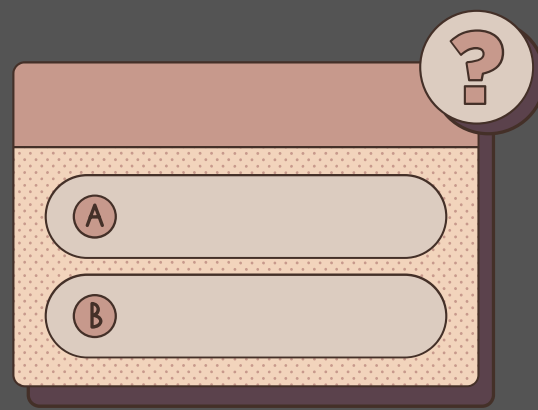
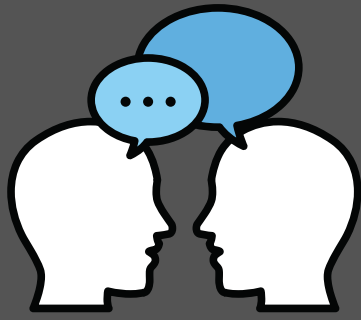
Other Activities by Participating Properties

YTL Group Offices



Earth Hour communications - email blasts, social media posts, Monday Memos, YTL Sustainability website updates

Express Rail Link (ERL)



Emails will be sent to staff with tips and ideas for Earth Hour

Earth Hour quiz for passengers on 24 - 26 March

Awareness posts on social media on 16 - 26 March

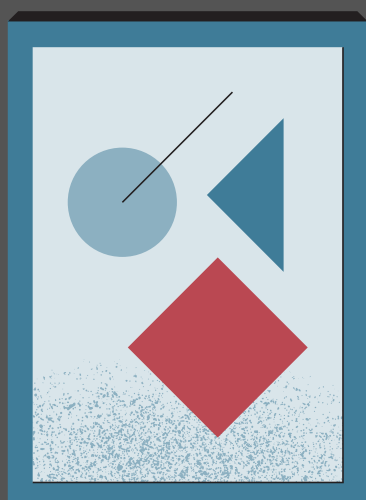
YTL International College of Hotel Management



Candlelight dinner at home is being encouraged



Seed-planting and growing will be documented



Posters placed around campus to raise awareness



Recycled items will be collected and donated to Tzu Chi Foundation

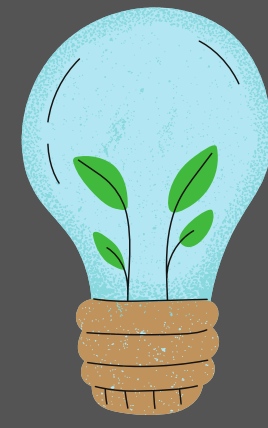


Students encouraged to participate in Earth Hour Virtual Run for Nature 2022

Pangkor Laut Resort



"60+" logo formation using candles at Jetty Beach Area



Essential lighting will be functioning at 30% capacity

The Majestic Malacca



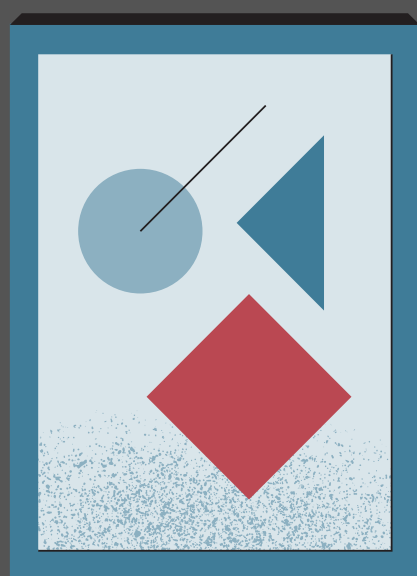
Tea light candles will be placed around the hotel

YTL PowerSeraya

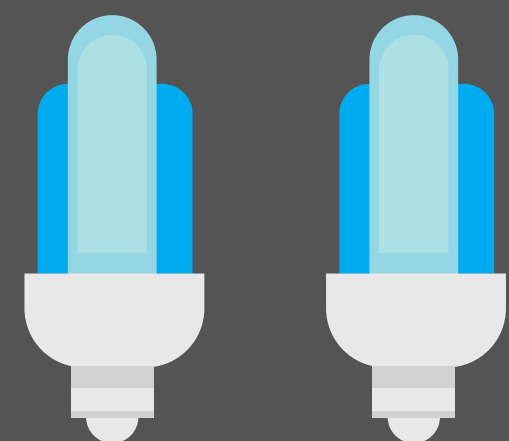


A talk on the company's new sustainability plans under the 60-30 vision will be held. 60-30 refers to their aim to reduce their GHG emissions by 60% from 2010, by 2030

YTL Jawa Timur



Posters for environmental campaign placed at power plant area, OHC and Bermi Ecopark

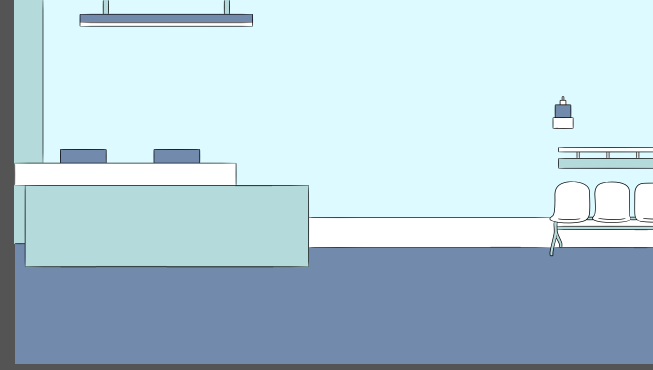


"60+" logo formation with LED lamps at Bermi Ecopark

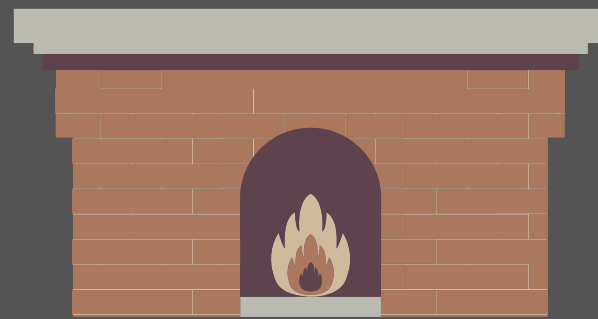
Niseko Village 🇯🇵



Tea light candles will be placed around hotels



Candles will be placed on Ume Lounge tables

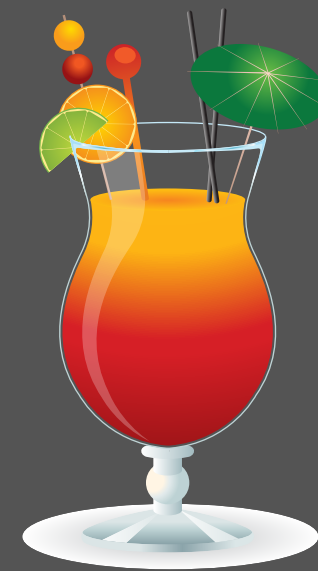


Fireplace will stand out in the reduced-lighting atmosphere

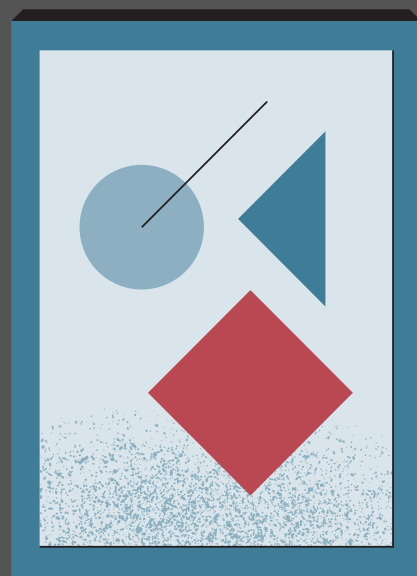
Melbourne Marriott Hotel 🇺🇸



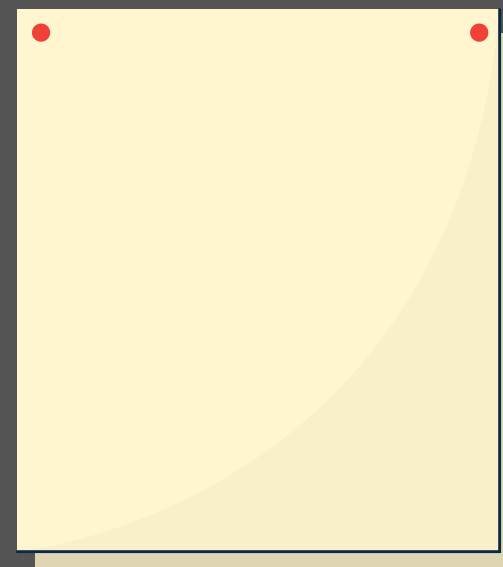
Candles will be placed in public areas around the hotel



Canepés and drinks will be served at lobby



Posters around hotel to raise awareness

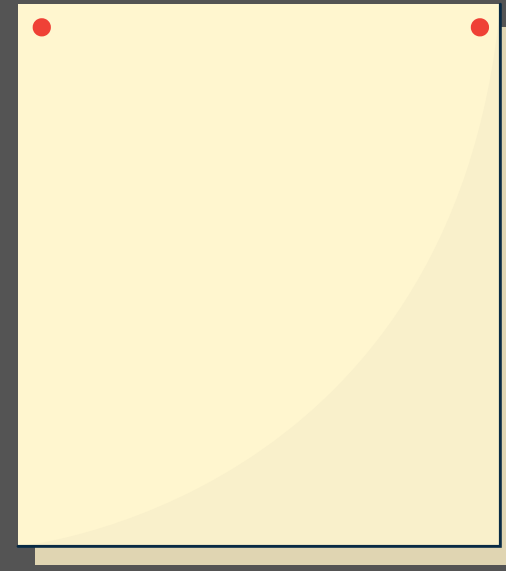


Earth Hour signs will be displayed at lobby and restaurant

Sydney Harbour Marriott Hotel



Candles will be placed in public areas around hotel



Earth Hour sign will be displayed at lobby



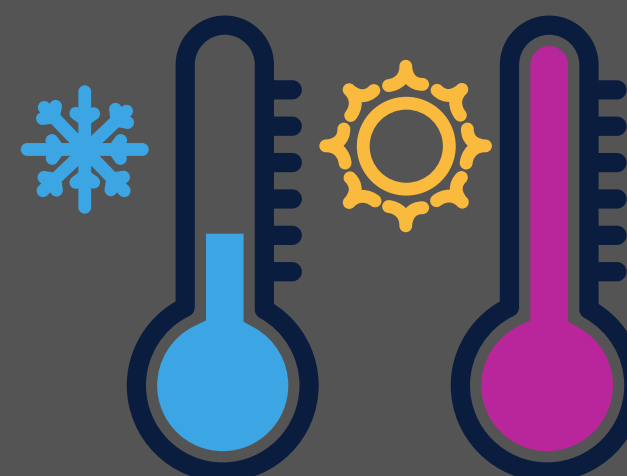
Customs House Bar will be serving Earth Hour exotic cocktail



Customs House Bar will be offering candlelight dinners and new item on menu



Paper usage and energy consumption will be reduced



Chiller temperature will be increased by 2 degrees and boiler temperature will be turned down



Facebook event will be hosted